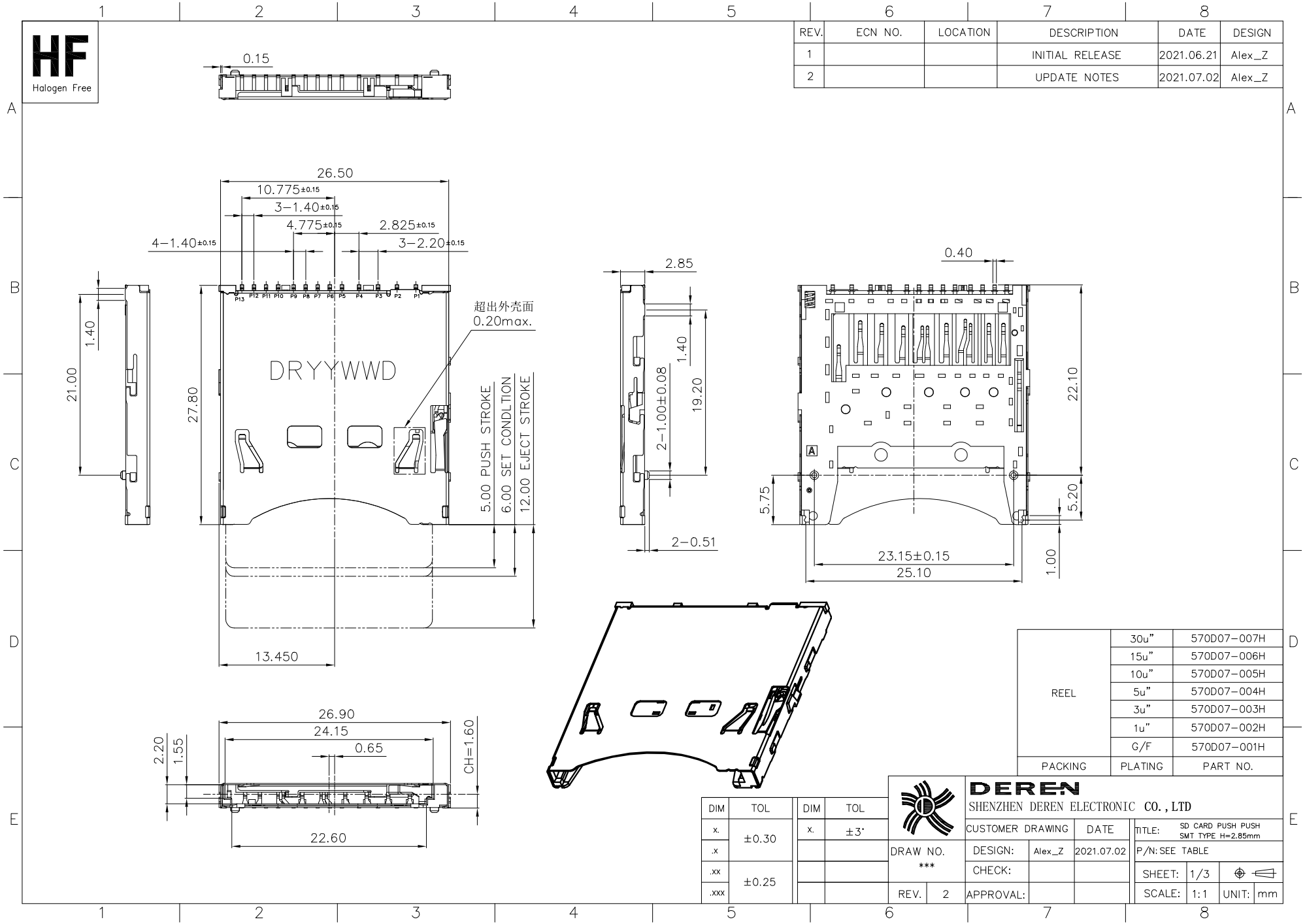


HF
Halogen Free

REV.	ECN NO.	LOCATION	DESCRIPTION	DATE	DESIGN
1			INITIAL RELEASE	2021.06.21	Alex_Z
2			UPDATE NOTES	2021.07.02	Alex_Z



超出外壳面
0.20max.

5.00 PUSH STROKE
6.00 SET CONDITION
12.00 EJECT STROKE

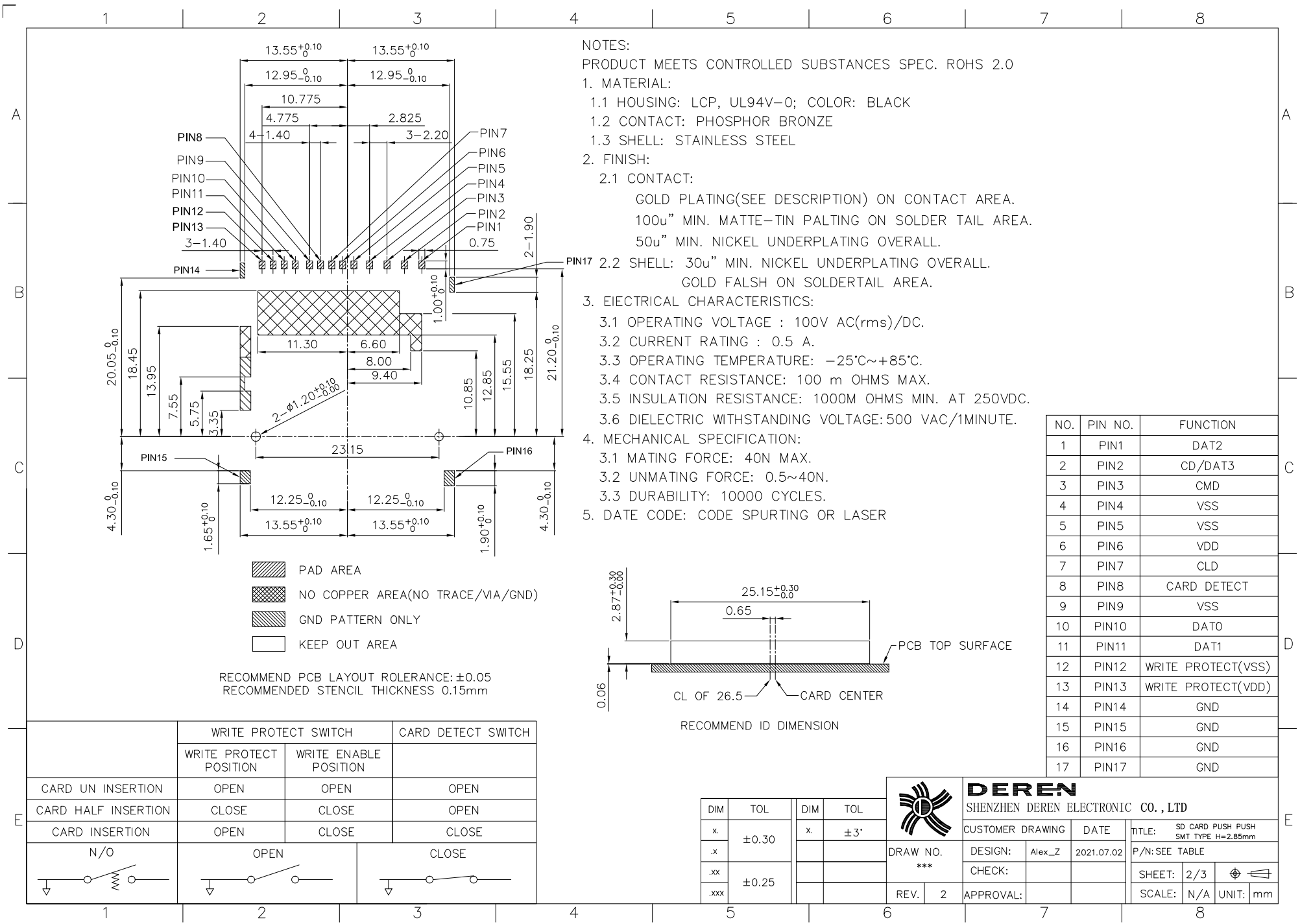
REEL	30u"	570D07-007H
	15u"	570D07-006H
	10u"	570D07-005H
	5u"	570D07-004H
	3u"	570D07-003H
	1u"	570D07-002H
	G/F	570D07-001H
PACKING	PLATING	PART NO.



DEREN
SHENZHEN DEREN ELECTRONIC CO., LTD

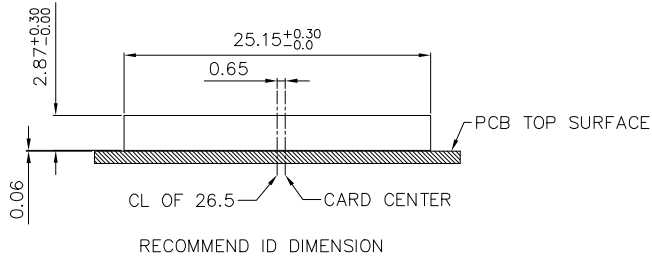
DIM	TOL	DIM	TOL
x.	±0.30	x.	±3'
.x			
.xx	±0.25		
.xxx			

DRAW NO. ***	DESIGN:	Alex_Z	DATE	2021.07.02	TITLE: SD CARD PUSH PUSH SMT TYPE H=2.85mm P/N: SEE TABLE
	CHECK:				
REV.	2	APPROVAL:			SHEET: 1/3
					SCALE: 1:1
					UNIT: mm



- NOTES:
 PRODUCT MEETS CONTROLLED SUBSTANCES SPEC. ROHS 2.0
- MATERIAL:
 - HOUSING: LCP, UL94V-0; COLOR: BLACK
 - CONTACT: PHOSPHOR BRONZE
 - SHELL: STAINLESS STEEL
 - FINISH:
 - CONTACT:
 - GOLD PLATING(SEE DESCRIPTION) ON CONTACT AREA.
 - 100u" MIN. MATTE-TIN PALTING ON SOLDER TAIL AREA.
 - 50u" MIN. NICKEL UNDERPLATING OVERALL.
 - SHELL: 30u" MIN. NICKEL UNDERPLATING OVERALL.
 GOLD FALSH ON SOLDERTAIL AREA.
 - ELECTRICAL CHARACTERISTICS:
 - OPERATING VOLTAGE : 100V AC(rms)/DC.
 - CURRENT RATING : 0.5 A.
 - OPERATING TEMPERATURE: -25°C~+85°C.
 - CONTACT RESISTANCE: 100 m OHMS MAX.
 - INSULATION RESISTANCE: 1000M OHMS MIN. AT 250VDC.
 - DIELECTRIC WITHSTANDING VOLTAGE:500 VAC/1MINUTE.
 - MECHANICAL SPECIFICATION:
 - MATING FORCE: 40N MAX.
 - UNMATING FORCE: 0.5~40N.
 - DURABILITY: 10000 CYCLES.
 - DATE CODE: CODE SPURTING OR LASER

NO.	PIN NO.	FUNCTION
1	PIN1	DAT2
2	PIN2	CD/DAT3
3	PIN3	CMD
4	PIN4	VSS
5	PIN5	VSS
6	PIN6	VDD
7	PIN7	CLD
8	PIN8	CARD DETECT
9	PIN9	VSS
10	PIN10	DAT0
11	PIN11	DAT1
12	PIN12	WRITE PROTECT(VSS)
13	PIN13	WRITE PROTECT(VDD)
14	PIN14	GND
15	PIN15	GND
16	PIN16	GND
17	PIN17	GND



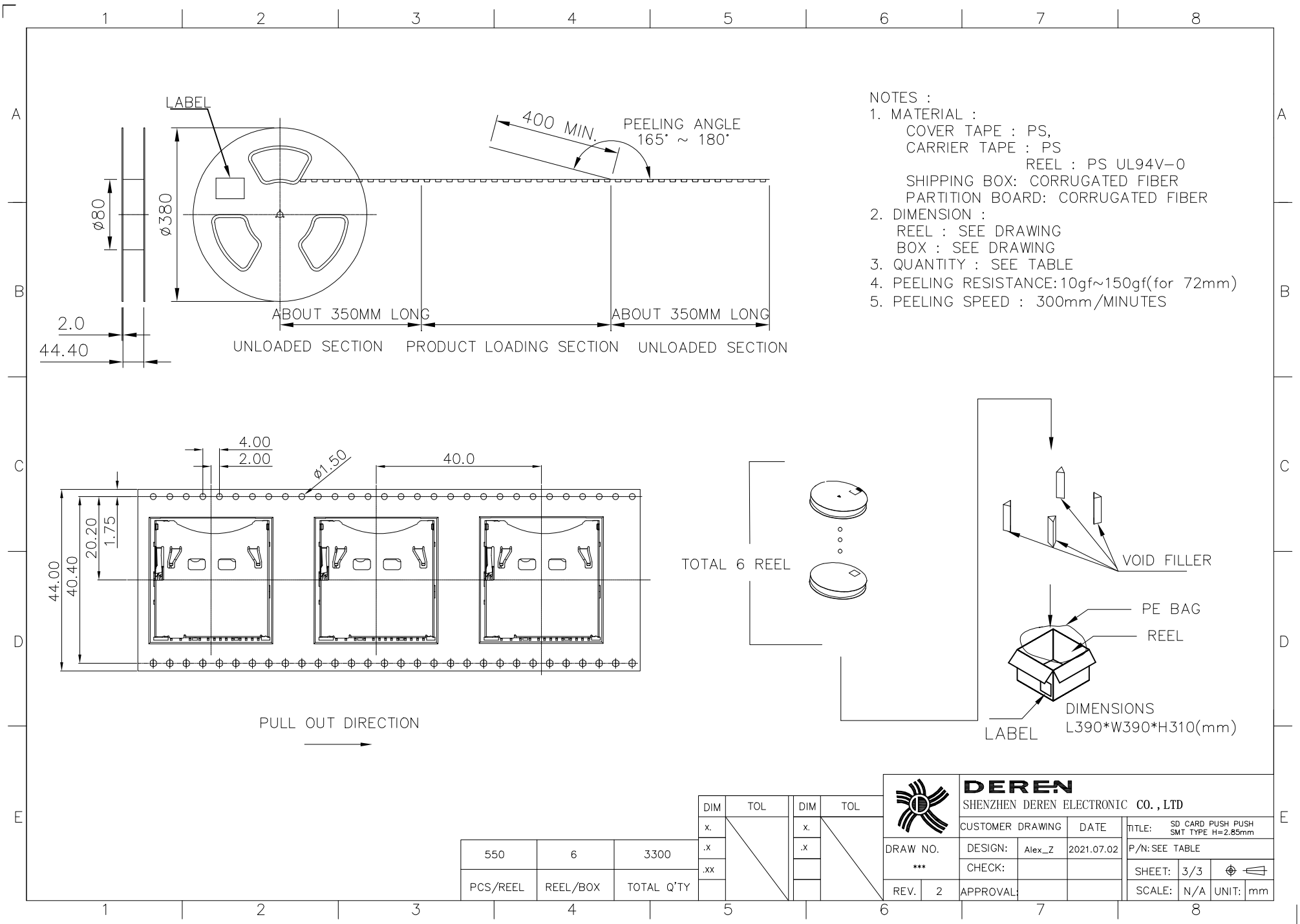
RECOMMEND PCB LAYOUT ROLRANCE: ±0.05
 RECOMMENDED STENCIL THICKNESS 0.15mm

	WRITE PROTECT SWITCH		CARD DETECT SWITCH
	WRITE PROTECT POSITION	WRITE ENABLE POSITION	
CARD UN INSERTION	OPEN	OPEN	OPEN
CARD HALF INSERTION	CLOSE	CLOSE	OPEN
CARD INSERTION	OPEN	CLOSE	CLOSE
N/O	OPEN		CLOSE

DIM	TOL	DIM	TOL
.x	±0.30	.x	±3'
.xx	±0.25		
.xxx			

DEREN
 SHENZHEN DEREN ELECTRONIC CO., LTD


CUSTOMER DRAWING	DATE	TITLE: SD CARD PUSH PUSH SMT TYPE H=2.85mm
DESIGN: Alex_Z	2021.07.02	P/N: SEE TABLE
CHECK:		SHEET: 2/3
REV: 2	APPROVAL:	SCALE: N/A UNIT: mm



- NOTES :
- MATERIAL :
 COVER TAPE : PS,
 CARRIER TAPE : PS
 REEL : PS UL94V-0
 SHIPPING BOX: CORRUGATED FIBER
 PARTITION BOARD: CORRUGATED FIBER
 - DIMENSION :
 REEL : SEE DRAWING
 BOX : SEE DRAWING
 - QUANTITY : SEE TABLE
 - PEELING RESISTANCE: 10gf~150gf (for 72mm)
 - PEELING SPEED : 300mm/MINUTES

550	6	3300
PCS/REEL	REEL/BOX	TOTAL Q'TY

DIM	TOL	DIM	TOL
x.		x.	
.x		.x	
.xx			

 DEREN SHENZHEN DEREN ELECTRONIC CO., LTD		CUSTOMER DRAWING	DATE	TITLE: SD CARD PUSH PUSH SMT TYPE H=2.85mm
		DESIGN: Alex_Z	2021.07.02	P/N: SEE TABLE
DRAW NO. ***	CHECK:			SHEET: 3/3
REV. 2	APPROVAL:			SCALE: N/A UNIT: mm