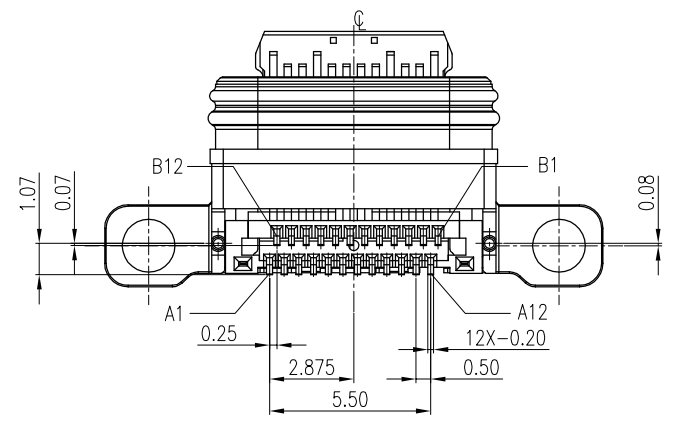
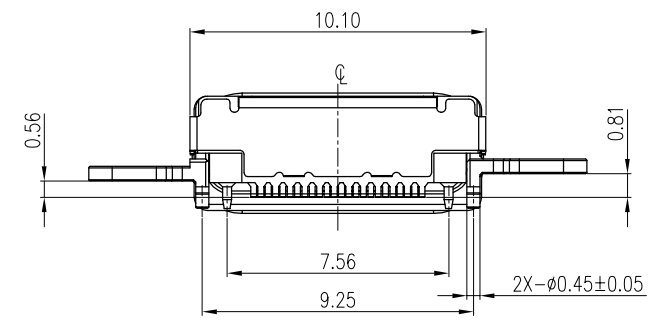
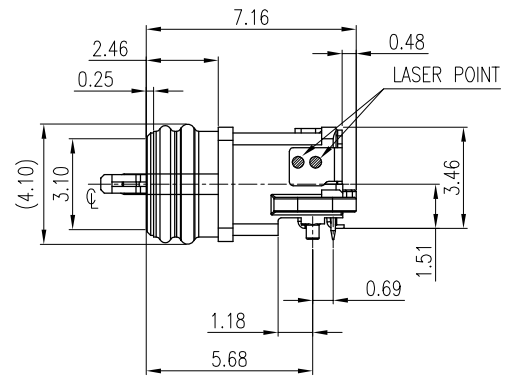
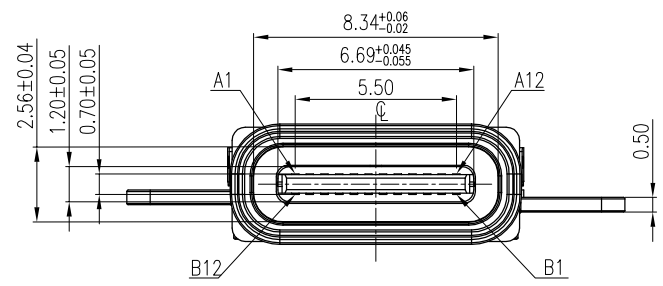
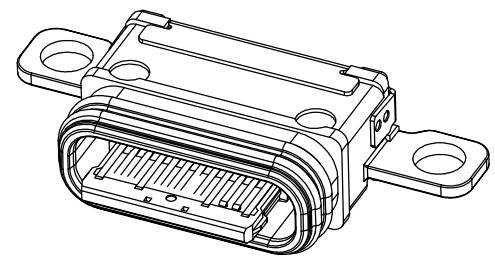
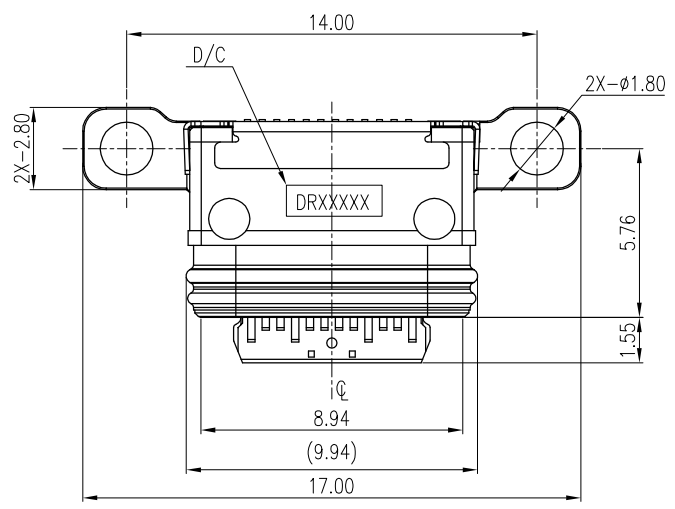


HF
Halogen Free



REV.	ECN NO.	LOCATION	DESCRIPTION	DATE	DESIGN
A			OFFICIAL DRAWING	04/28'18	Cecil



NO.	PART NAME	MATERIAL	FINISH	Q'TY
7	PATting	EPOXY RESIN	—	1
6	O-RING	SILICONE RUBBER	—	1
5	BACK CAP	SUS 304	—	1
4	MID-PLATE	SUS 301	NICKEL PLATING 50u Min	1
3	MIM SHELL	MIM-17-4PH	—	1
2	CONTACT	NKE012	Ni50u"/Au G/F/Sn100u"	24
1	HOUSING	PA46	BLACK,UL94V-0	3

DIM	TOL	DIM	TOL
X.	±0.30	x.	±2°
.X	±0.25	.x	±1°
.XX	±0.15		
.XXX	±0.05		



DEREN
SHENZHEN DEREN ELECTRONIC CO., LTD

INSPECTION	DRAWING	DATE	TITLE: USB TYPE C REC WATERPROOF DUAL SMT CONNECTOR FPC TYPE
DESIGN:	Cecil	04/28'18	P/N: 560Q14-002H
CHECK:			SHEET: 1/3
APPROVAL:			SCALE: 1:1 UNIT: mm

DRAW NO.
SC1804332

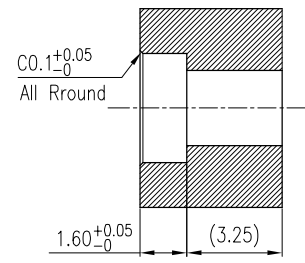
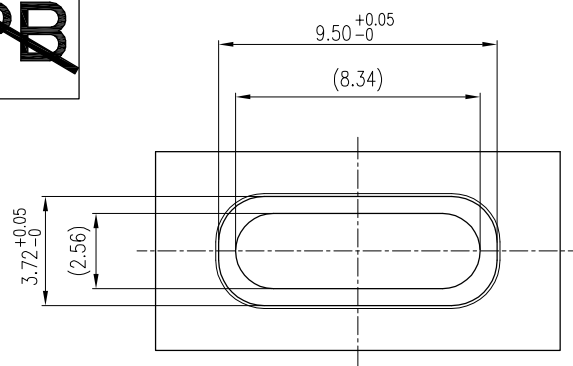
REV. A

HF
Halogen Free

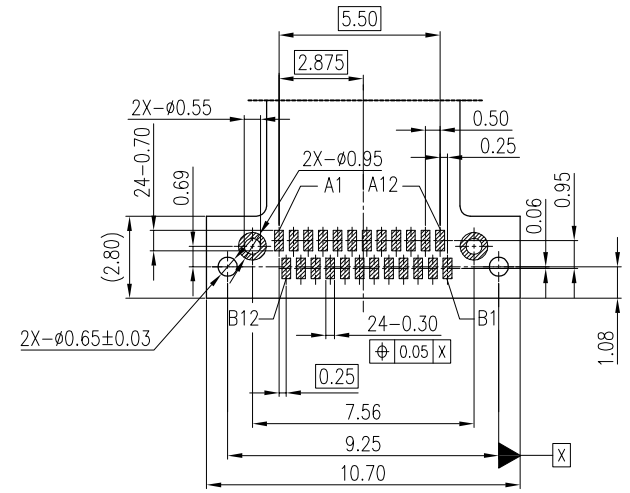
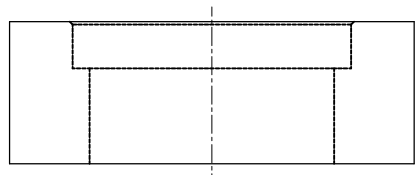


REV.	ECN NO.	LOCATION	DESCRIPTION	DATE	DESIGN
A			OFFICIAL DRAWING	04/28'18	Cecil

RECOMMENED CASE DIMENSION



1. ELECTRICAL :
- 1-1.CONTACT CURRENT RATING :
1.5A FOR VBUS AND GND.
(i.e., VBUS Pins A4,A9,B4,B9
GND Pins A1,A12,B1,B12)
CONNECTOR MAXIMUM WITHSTAND CURRENT 6A.
0.25A FOR ALL THE OTHERS CONTACTS.
 - 1-2.INSULATION RESISTANCE :
100 MEGAOHMS MIN. AT 250VDC.
 - 1-3.DIELECTRIC WITHSTANDING VOLTAGE :
100VAC MIN.
 - 1-4.LOW LEVEL CONTACT RESISTANCE :
INITIAL 40mΩ MAX.
AFTER 50mΩ MAX.
- 2.MECHANICAL CHARACTERISTICS :
- 2-1.INSERTION FORCE :5N~20N .
 - 2-2.EXTRACTION FORCE :
8N~20N FROM 1 TO 1000 CYCLES.
6~20N FROM 1001 TO 10000 CYCLE.
 - 2-3.DURABILITY :10,000 MATING CYCLES.
 - 2-4.OPERATING TEMPERATURE :-55°C TO +85°C
3. REFLOW SOLDER CAPABLE TO 260°C 10 SECONDS.

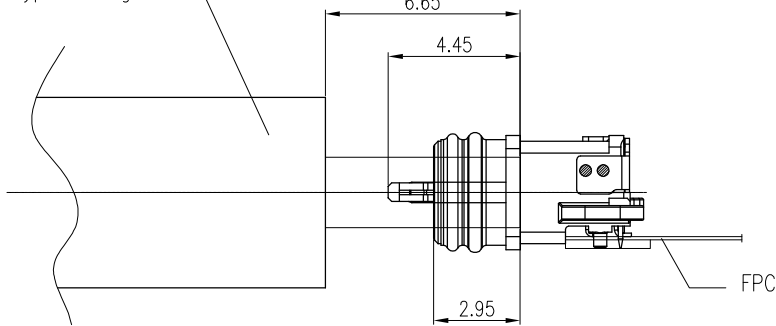


RECOMMENED FPC LAYOUT TOP VIEW
TOLERANCE: ±0.05

PIN DEFINE

Pin	SIGNAL NAME	Pin	SIGNAL NAME
A1	GND	B12	GND
A2	SSTXp1	B11	SSRXp1
A3	SSTXn1	B10	SSRXn1
A4	VBUS	B9	VBUS
A5	CC1	B8	SBU2
A6	Dp1	B7	Dn2
A7	Dn1	B6	Dp2
A8	SBU1	B5	CC2
A9	VBUS	B4	VBUS
A10	SSRXn2	B3	SSTXn2
A11	SSRXp2	B2	SSTXp2
A12	GND	B1	GND

USB Type C Plug



DIM	TOL	DIM	TOL
X.	±0.30	x.	±2°
.X	±0.25	.x	±1°
.XX	±0.15		
.XXX	±0.05		



DEREN
SHENZHEN DEREN ELECTRONIC CO.,LTD

INSPECTION		DRAWING		DATE		TITLE: USB TYPE C REC WATERPROOF DUAL SMT CONNECTOR FPC TYPE	
DESIGN:	Cecil	DATE:	04/28'18	P/N: 560Q14-002H		SHEET: 2/3	
CHECK:				SCALE: 1:1		UNIT: mm	
REV.	A	APPROVAL:					

DRAW NO.
SC1804332

REV. A

DESIGN: Cecil DATE: 04/28'18

CHECK:

APPROVAL:

TITLE: USB TYPE C REC WATERPROOF DUAL SMT CONNECTOR FPC TYPE

P/N: 560Q14-002H

SHEET: 2/3

SCALE: 1:1 UNIT: mm

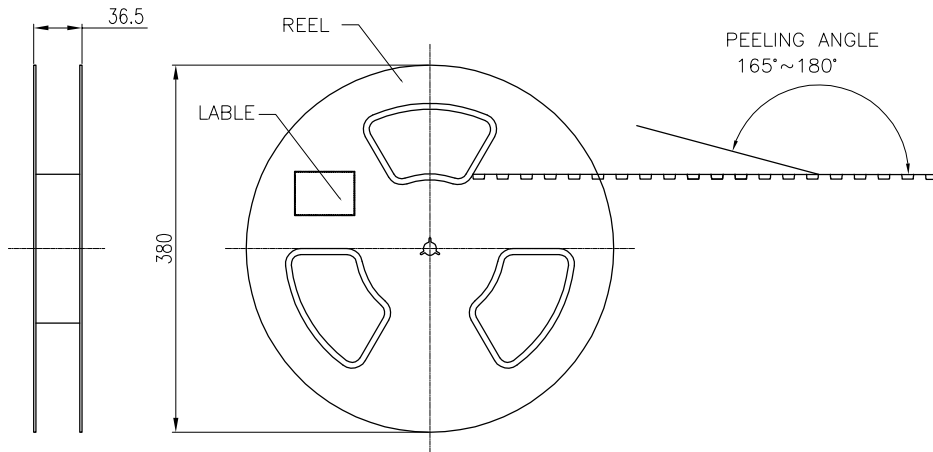
HF

Halogen Free



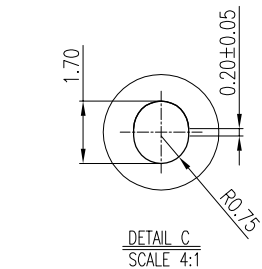
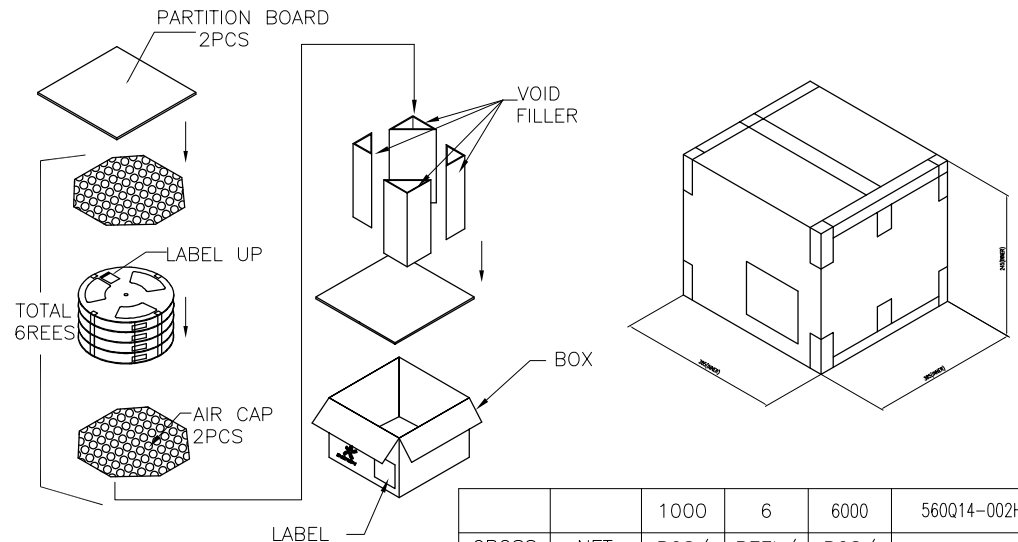
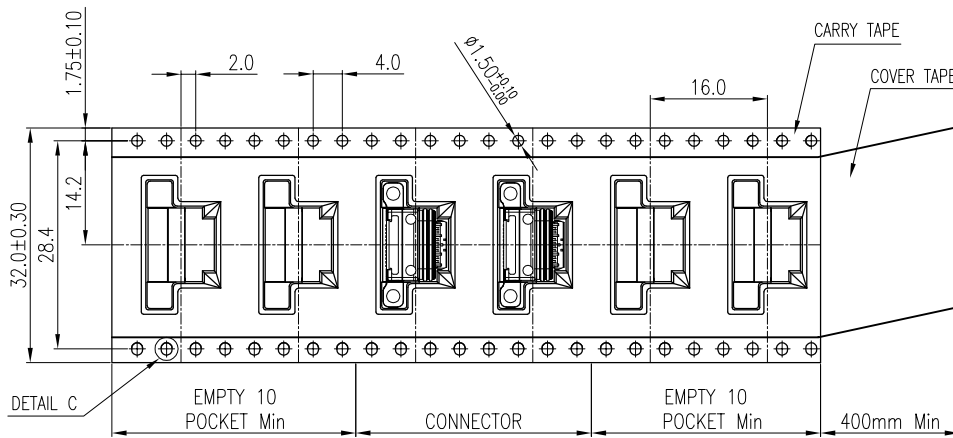
REV.	ECN NO.	LOCATION	DESCRIPTION	DATE	DESIGN
A			OFFICIAL DRAWING	04/28'18	周凌云

FEEDING DIRECTION →



NOTES :
 PACKAGING MATERIAL IN PLASTIC, RUBBER, INK, PIGMENT AND PAINT MEET CONTROLLED SUBSTANCES SPEC. ROHS 2.0
 * CADMIUM AND CADMIUM COMPOUNDS NOT TO EXCEED: 5 PPM.
 * LEAD, CADMIUM, CHROM VI AND MERCURY NOT TO EXCEED: 100 PPM (COMBINED).
 * CARRIER TAPES, COVER TAPES, REELS AND TAPED COMPONENTS MEET THE REQUIREMENTS DEFINED PER EIA-481-B.

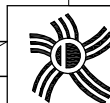
- MATERIAL :
 COVER TAPE : PS, COLOR: BLACK
 CARRIER TAPE : PET
 REEL : PS
 SHIPPING BOX: CORRUGATED FIBER
- DIMENSION :
 REEL : SEE DRAWING
 BOX : SEE DRAWING
- QUANTITY : SEE TABLE
- WEIGHT : SEE TABLE
- PEELING RESISTANCE : 10gf~130gf
- PEELING SPEED : 300mm/MINUTES



FEEDING DIRECTION →

GROSS WEIGHT	NET WEIGHT	PCS/ REEL	REEL/ BOX	PCS/ BOX	PART NUMBER
		1000	6	6000	560Q14-002H

DIM	TOL	DIM	TOL
.x	±0.30	.x	±2'
.x	±0.20	.x	±1'
.xx	±0.15		



DEREN
 SHENZHEN DEREN ELECTRONIC CO., LTD

DRAW NO. SC1804332	DESIGN: Cecil	DATE 04/28'18	TITLE: USB TYPE C REC WATERPROOF DUAL SMT CONNECTOR FPC TYPE
REV. A	CHECK:	APPROVAL:	SHEET: 3/3
			SCALE: 1:1 UNIT: mm