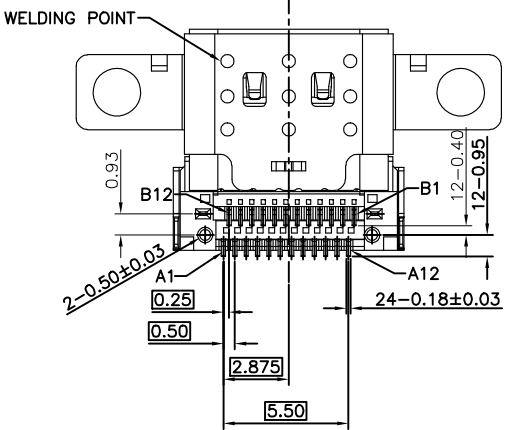
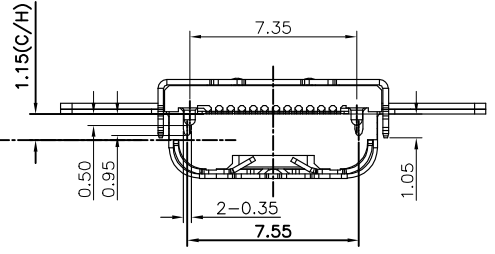
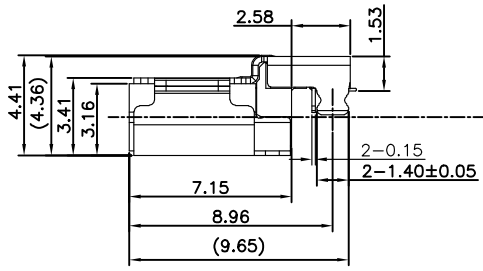
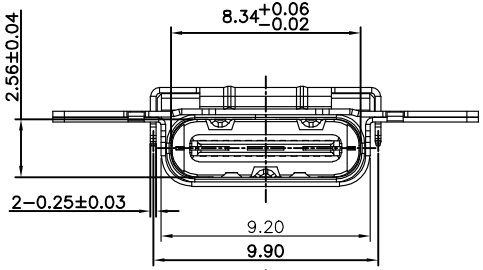
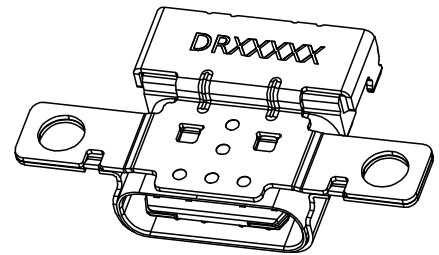
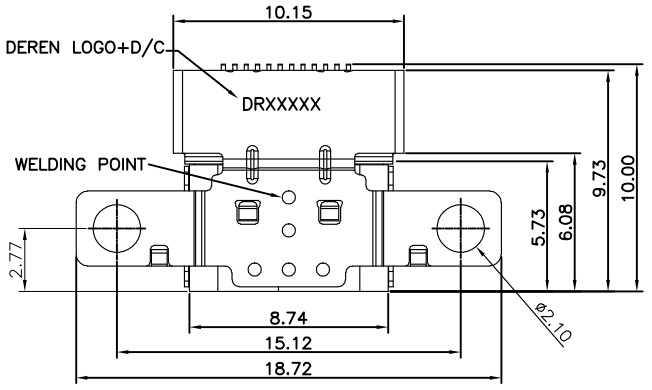




REV.	ECN NO.	LOCATION	DESCRIPTION	DATE	DESIGN
X1			INITIAL RELEASE	05/13'19	SUNDY
X2			CHANGE LAYOUT	05/20'19	SUNDY
X3		△3	CHANGE LAYOUT	01/07'20	Chen haibo
X4			CHANGE THE WELDING POINT	03/20'20	Chen haibo
X5			ALTER ISOMETRIC VIEW	11/26'21	WWZ
X6		△6	CHENGE THE CURRENT RATING	04/07'22	Chen haibo



ITEM	PART NAME	Q'TY	MATERIAL	REMARK
⑥	CONTACT	24PCS	COOPER ALLOY	30u" GOLD PLATING ON CONTACT AREA 1u" GOLD FLASH ON SOLDER AREA 50u" MIN. Ni UNDER PLATED OVER ALL.
⑤	I/M	1PCS	HIGHTEMP-PLASTIC	UL 94-V0, BLACK
④	MID_PLATE	1PCS	STAINLESS STEEL	50u" MIN Ni PLATED OVER ALL.
③	INSIDE SHELL	1PCS	STAINLESS STEEL	50u" MIN BLACK Ni PLATED OVER ALL.
②	TOP SHELL	1PCS	STAINLESS STEEL	50u" MIN BLACK Ni PLATED OVER ALL.
①	BOTTOM SHELL	1PCS	STAINLESS STEEL	50u" MIN BLACK Ni PLATED OVER ALL.

<b>DEREN</b> SHENZHEN DEREN ELECTRONIC CO., LTD		CUSTOMER DRAWING    DATE: 04/07'22		TITLE: UC REC CH=-1.15 WITH EAR Dual SMT Type CONN P/N: 560Q17-001H
DIM    TOL    DIM    TOL		DRAW NO.    DESIGN: Chen haibo		
x.	±0.50	x.	±2'	SC1804826    CHECK: Charles    04/07'22
.x	±0.30	.x	±1'	REV. X6    APPROVAL: Smark    04/07'22
.xx	±0.20			SHEET: 1/3    SCALE: 1:1    UNIT: mm



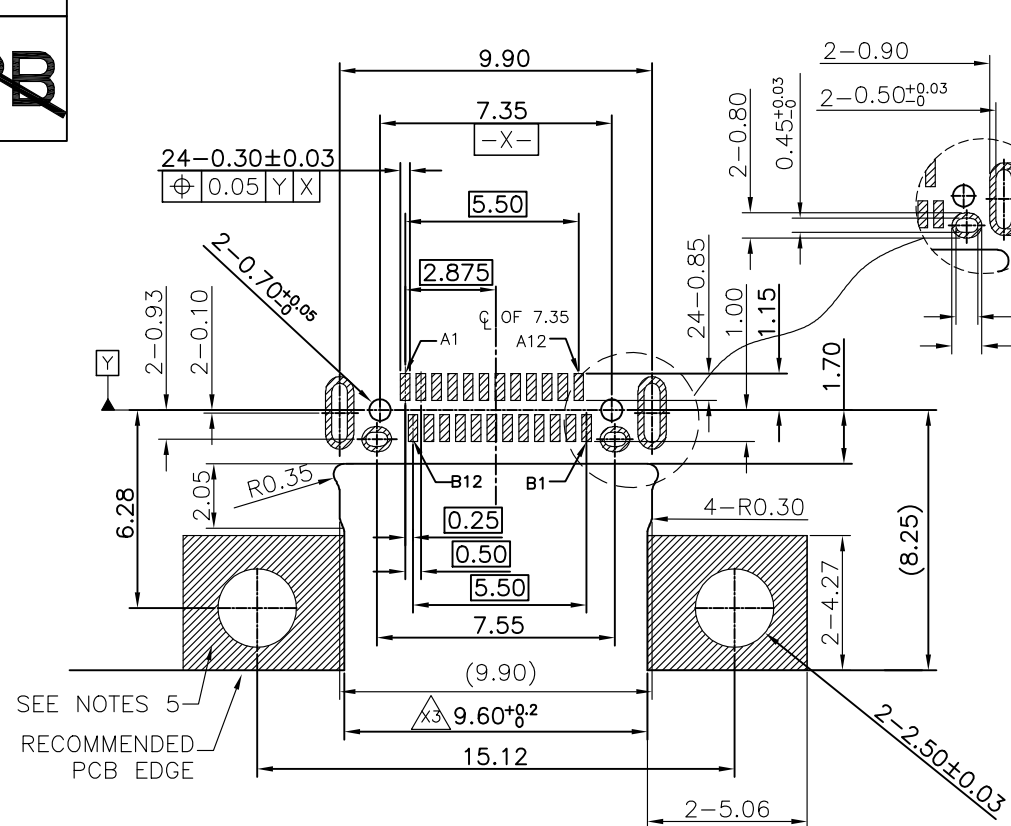
Halogen Free



REV.	ECN NO.	LOCATION	DESCRIPTION	DATE	DESIGN
			SEE SHEET 1		

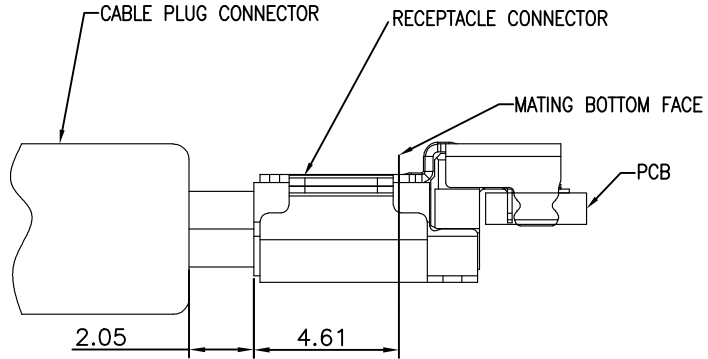
NOTES:

- MATERIAL: SEE TABLE
- ELECTRICAL PERFORMANCES:
  - VOLTAGE RATING: 20V DC MAX
  - CURRENT RATING:
    - 7A FOR VBUS (i.e. Pins A4,A9,B4,B9)
    - 0.25A FOR Vconn (i.e. Pins B5)
    - 7.25A FOR GND (i.e. Pins A1,A12,B1,B12)
  - LOW LEVEL CONTACT RESISTANCE: 40mΩ MAX. FOR VBUS,GND AND OTHE CONTACTS, 50mΩ MAX.FINAL AFTER TEST.
  - INSULATION RESISTANCE: 500 MΩ MIN
  - DIELECTRIC WITHSTANDING VOLTAGE: SUBJECT A VOLTAGE OF 100V AC FOR 1MINUTE BETWEEN ADJACENT CONTACTS;
- MECHANICAL PERFORMANCES:
  - INSERTION FORCE: 5N~20N.
  - EXTRACTION FORCE: 8N~20N FROM 1 TO 1000 CYCLES. 6N~20N FROM 1001 TO 10000 CYCLES.
  - DURABILITY: 10,000 CYCLES.
  - OPERATING TEMPERATURE: -55°C TO +85°C
- REFLOW SOLDER CAPABLE TO 260°C 10 SECS.
- NO PCB ROUTING ALLOWEN IN THIS AREA
- PART NUMBER INFORMATION: SEE TABLE



SEE NOTES 5  
RECOMMENDED  
PCB EDGE

RECOMMENDED PCB LAYOUT  
PCB THICKNESS 1.0±0.05



MATING CONDITION

PIN NO.

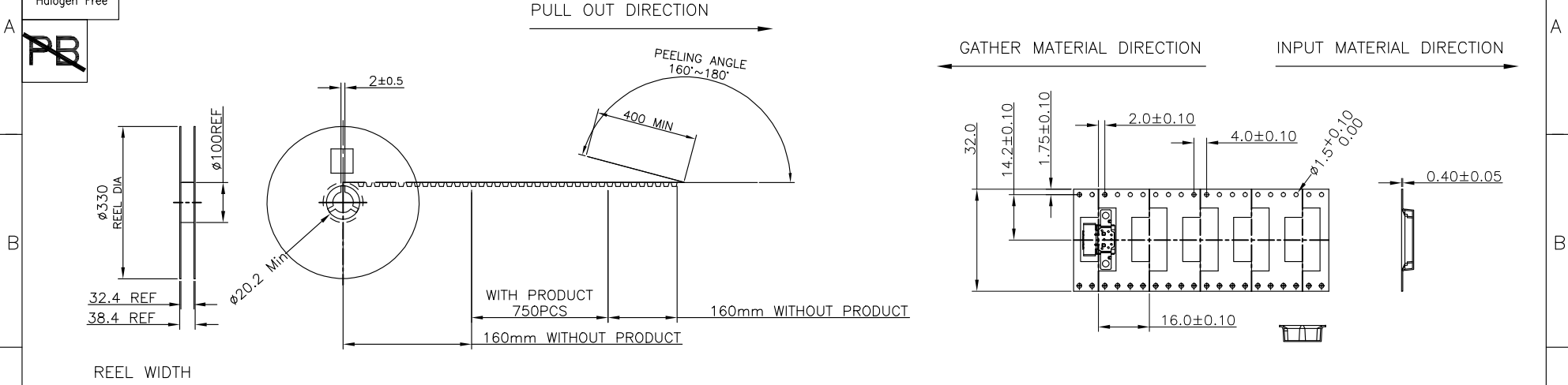
A1	A2	A3	A4	A5	A6	A7	A8	A9	A10	A11	A12
GND	SSTxp1	SSTXn1	Vbus	CC1	Dp1	Dn1	SBU1	Vbus	SSRXn2	SSRXp2	GND
GND	SSRXp1	SSRXn1	Vbus	SBU2	Dn2	Dp2	CC2	Vbus	SSTXn2	SSTXp2	GND
B12	B11	B10	B9	B8	B7	B6	B5	B4	B3	B2	B1

DIM	TOL	DIM	TOL	DEREN SHENZHEN DEREN ELECTRONIC CO., LTD				
x.	±0.50	x.	±2'	DRAW NO. SC1804826	DESIGN:	Chen haibo	04/07'22	TITLE: UC REC CH=-1.15 WITH EAR Dual SMT Type CONN
.x	±0.30	.x	±1'		CHECK:	Charles	04/07'22	P/N: 560Q17-001H
.xx	±0.20				REV. X6	APPROVAL:	Smark	04/07'22
								SHEET: 2/3
								SCALE: 1:1
								UNIT: mm

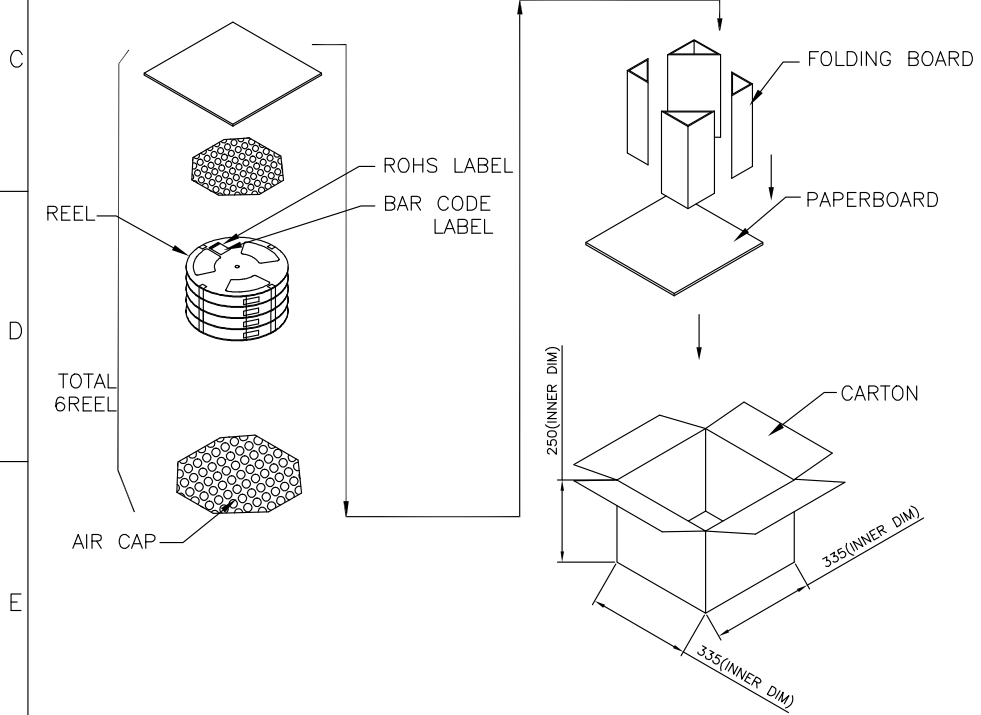
**HF**  
Halogen Free



REV.	ECN NO.	LOCATION	DESCRIPTION	DATE	DESIGN
			SEE SHEET 1		



REEL WIDTH



NOTES: ( FOR REEL )  
 PRODUCT MUST MEET CONTROLLED SUBSTANCES SPEC. ROHS 2.0  
 PACKAGING MATERIAL IN PLASTIC, RUBBER, INK, PIGMENT AND PAINT  
 MUST MEET CONTROLLED SUBSTANCES SPEC PER 230-702.  
 \* CADMIUM AND CADMIUM COMPOUNDS NOT TO EXCEED: 5 PPM.  
 \* LEAD, CADMIUM, CHROM VI AND MERCURY NOT TO EXCEED: 100 PPM ( COMBINED ).  
 \* CARRIER TAPES, COVER TAPES, REELS AND TAPED COMPONENTS MUST MEET THE  
 REQUIREMENTS DEFINED PER EIA-481-B.

- MATERIAL:  
 COVER TAPE: ANTISTATIC PS T=0.05±0.01mm, COLOR: CLEAR  
 CARRIER TAPE: ANTISTATIC PET T=0.40±0.05mm, COLOR: CLEAR  
 REEL: PS UL94V-0  
 SHIPPING BOX: CORRUGATED FIBER
- DIMENSION:  
 REEL: SEE DRAWING  
 BOX: SEE DRAWING
- QUANTITY: SEE TABLE
- WEIGHT: SEE TABLE
- PEELING RESISTANCE: 10gf~130gf (for 12~56mm)
- PEELING SPEED: 300mm/MINUTES

PCS/ REEL	REEL/ BOX	PCS/ BOX	PART NUMBER
750	6	4500	560Q17-001H

		<b>DEREN</b> SHENZHEN DEREN ELECTRONIC CO., LTD			
DIM TOL x. ±0.50 .x ±0.30 .xx ±0.20		DIM TOL x. ±2' .x ±1'		CUSTOMER DRAWING DATE DESIGN: Chen haibo 04/07'22 CHECK: Charles 04/07'22 APPROVAL: Smark 04/07'22	
DRAW NO. SC1804826		REV. X6		TITLE: UC REC CH=-1.15 WITH EAR Dual SMT Type CONN P/N:560Q17-001H SHEET: 3/3 SCALE: 1:1 UNIT: mm	