

⑥	TOP CONTACT	1 SET	COPPER ALLOY	80μ" MIN. NI UNDER PLATING, 50μ" MIN. MATTE TIN PLATING ON SOLDER AREA.
⑤	BOTTOM CONTACT	1 SET	COPPER ALLOY	30μ" MIN. GOLD PLATING ON CONTACT AREA.
④	MID PLATE	1 PCS	STAINLESS	50μ" MIN. NI PLATING OVERALL.
③	HOUSING	1 PCS	LCP	COLOR BLACK;UL94V-0
②	INNER SHELL	1 PCS	STAINLESS	WATER CLEANING
①	OUTER SHELL	1 PCS	STAINLESS	50μ" MIN. BRIGHT NI OVERALL
ITEM	PART NAME	QTY	MATERIAL	REMARK



<b>DEREN</b>		SHENZHEN DEREN ELECTRONIC CO., LTD	
CUSTOMER DRAWING	DESIGN:	DATE	TITLE:
	Landon	10/20'21	UC REC 24P R/A CH=0.7 HYBRID CONN.
CHECK:	Charles	10/20'21	P/N:5600B2-006H1000R
REV. X6	APPROVAL:	Smack	10/20'21
			SHEET: 1/3
			SCALE: 1:1
			UNIT: mm

DIM	TOL	DIM	TOL
X.	±0.30	X.	±3'
.X	±0.25	.X	±2'
.XX	±0.15		
.XXX	±0.10		

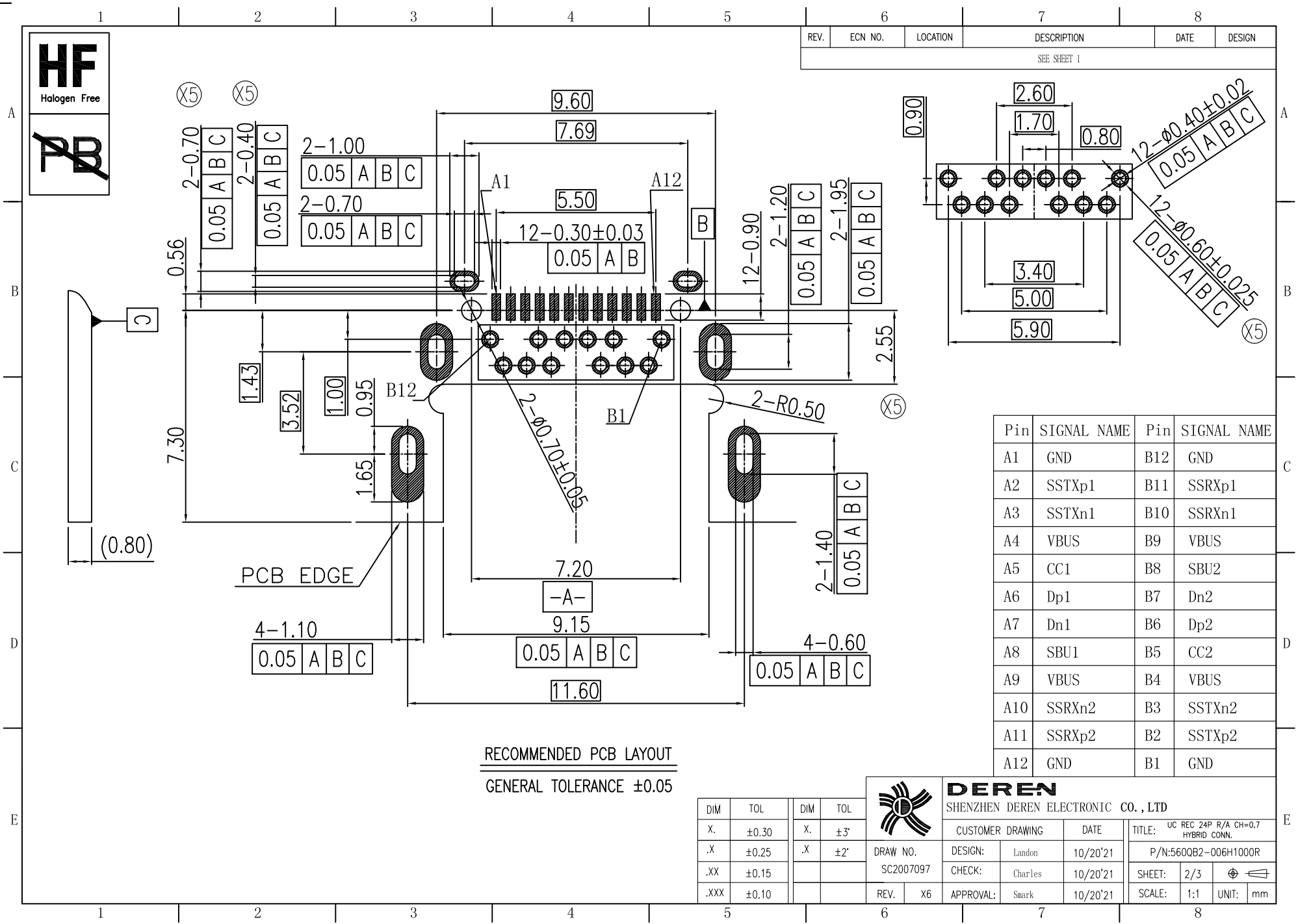
REV.	ECN NO.	LOCATION	DESCRIPTION	DATE	DESIGN
X5		⑤	CHANGE THE LAYOUT	10/14'21	Landon
X6		⑥	INCREASE THE PICK UP AREA	10/20'21	Landon

NOTES :

- ELECTRICAL :
  - CONTACT CURRENT RATING :
    - 5A FOR VBUS (Pins A4,A9,B4,B9),1.25A FOR VCONN.
    - 6.25A FOR GND (Pins A1,A12,B1,B12)
  - INSULATION RESISTANCE :
    - 100 MEGAOHMS. AT 300VDC.
  - DIELECTRIC WITHSTANDING VOLTAGE :100VAC, 0.5mA LEAKAGE CURRENT MAX..
  - LOW LEVEL CONTACT RESISTANCE :
    - INITIAL 40mΩ MAX. AFTER LIFE 50mΩ MAX.
- MECHANICAL CHARACTERISTICS :
  - INSERTION FORCE : 5N~20N .
  - EXTRACTION FORCE : 8N~20N FROM 1 TO 30 CYCLES. 6N~20N FROM 31 TO 10000 CYCLES.
  - DURABILITY : 10,000 MATING CYCLES.
  - OPERATING TEMPERATURE :-55°C TO +85°C
  - RECOMMENDED STENCIL THICKNESS: 0.12mm min.
- PART NUMBER:560QB2-006H1000R



REV.	ECN NO.	LOCATION	DESCRIPTION	DATE	DESIGN
SEE SHEET 1					



Pin	SIGNAL NAME	Pin	SIGNAL NAME
A1	GND	B12	GND
A2	SSTXp1	B11	SSRXp1
A3	SSTXn1	B10	SSRXn1
A4	VBUS	B9	VBUS
A5	CC1	B8	SBU2
A6	Dp1	B7	Dn2
A7	Dn1	B6	Dp2
A8	SBU1	B5	CC2
A9	VBUS	B4	VBUS
A10	SSRXn2	B3	SSTXn2
A11	SSRXp2	B2	SSTXp2
A12	GND	B1	GND

RECOMMENDED PCB LAYOUT  
GENERAL TOLERANCE ±0.05

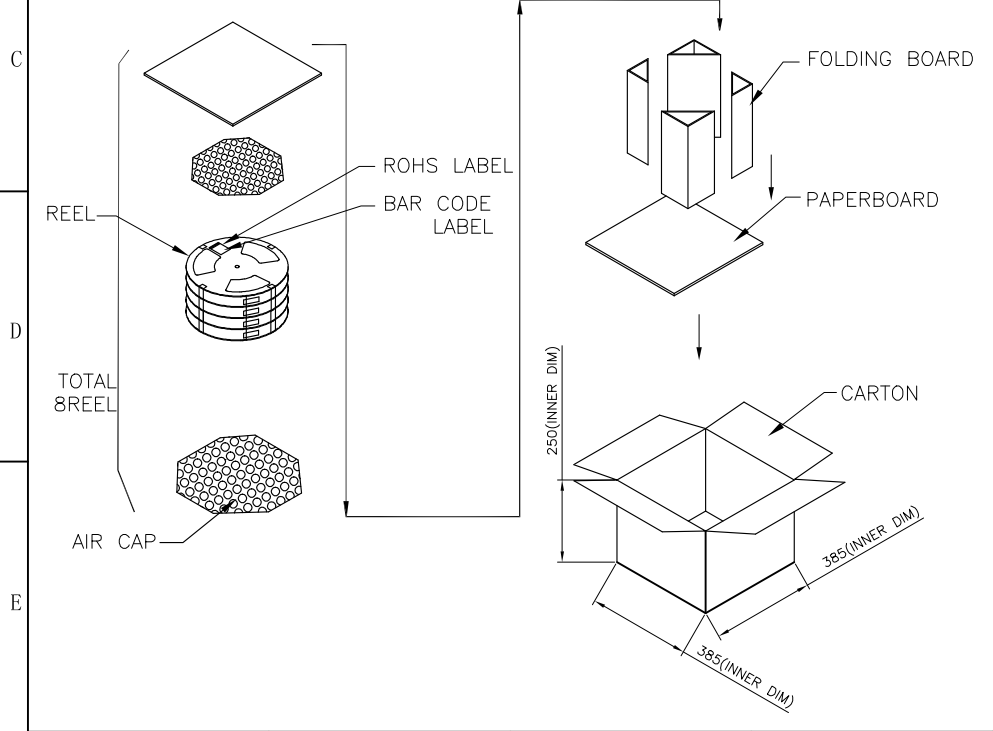
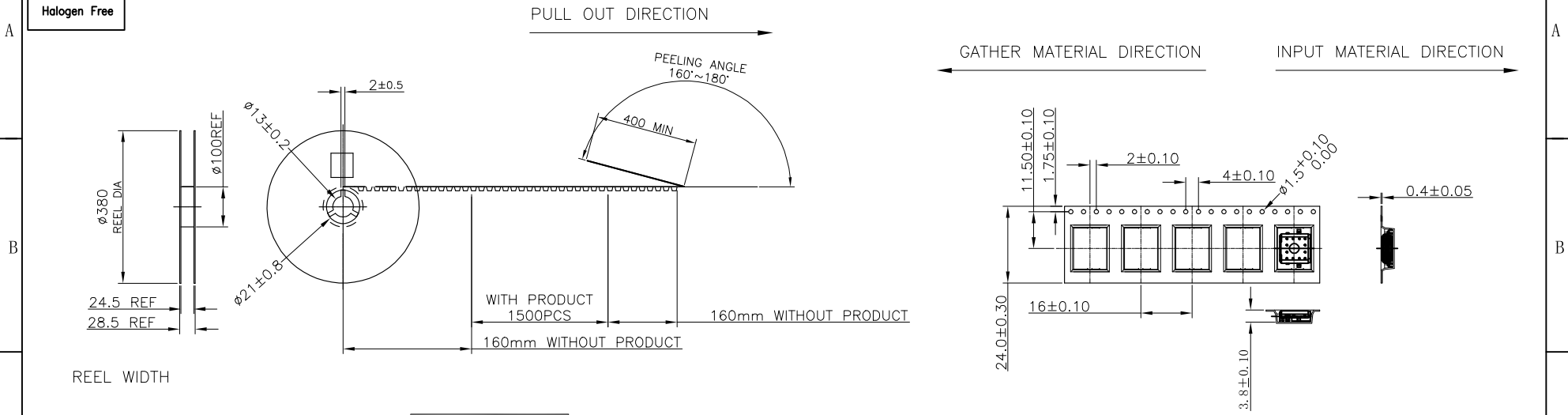
DIM	TOL	DIM	TOL
.X	±0.30	.X	±3°
.X	±0.25	.X	±2°
.XX	±0.15		
.XXX	±0.10		

**DEREN**  
SHENZHEN DEREN ELECTRONIC CO., LTD

DRAW NO.	DESIGN:	Landon	DATE:	10/20'21	TITLE: UC REC 24P R/A CH=0.7 HYBRID CONN.
	SC2007097	CHECK:	Charles	10/20'21	
REV.	X6	APPROVAL:	Smark	10/20'21	SHEET: 2/3
					SCALE: 1:1
					UNIT: mm

**HF**  
Halogen Free

REV.	ECN NO.	LOCATION	DESCRIPTION	DATE	DESIGN
SEE SHEET 1					



NOTES :(FOR REEL)  
 PRODUCT MUST MEET CONTROLLED SUBSTANCES SPEC. ROHS 2.0  
 PACKAGING MATERIAL IN PLASTIC, RUBBER, INK, PIGMENT AND PAINT  
 MUST MEET CONTROLLED SUBSTANCES SPEC PER 230-702.  
 \* CADMIUM AND CADMIUM COMPOUNDS NOT TO EXCEED: 5 PPM.  
 \* LEAD, CADMIUM, CHROM VI AND MERCURY NOT TO EXCEED: 100 PPM (COMBINED).  
 \* CARRIER TAPES, COVER TAPES, REELS AND TAPED COMPONENTS MUST MEET THE  
 REQUIREMENTS DEFINED PER EIA-481-B.

1. MATERIAL :  
 COVER TAPE : ANTISTATIC P.S T=0.05±0.01 ,COLOR: CLEAR  
 CARRIER TAPE : ANTISTATIC P.S T=0.40mm ±0.05  
 REEL : PS UL94V-0  
 SHIPPING BOX: CORRUGATED FIBER

2. DIMENSION :  
 REEL : SEE DRAWING  
 BOX : SEE DRAWING


3. QUANTITY : SEE TABLE

4. WEIGHT : SEE TABLE

5. PEELING RESISTANCE : 10gf~130gf (for 12~56mm)

6. PEELING SPEED : 300mm/MINUTES

1500	8	12000	560QB2-006H1000R
PCS/ REEL	REEL/ BOX	PCS/ BOX	PART NUMBER

DIM		TOL		 <b>DEREN</b> SHENZHEN DEREN ELECTRONIC CO., LTD	CUSTOMER DRAWING		DATE	TITLE: UC REC 24P R/A CH#0.7 HYBRID CONN.	
.x	±0.30	.x	±2'		DRAW NO.	DESIGN:	Landon	10/20'21	P/N: 560QB2-006H1000R
.x	±0.20	.x	±1'	SC2007097	CHECK:	Charles	10/20'21	SHEET: 3/3	
.xx	±0.15			REV. X6	APPROVAL:	Smrk	10/20'21	SCALE: 1:1 UNIT: mm	