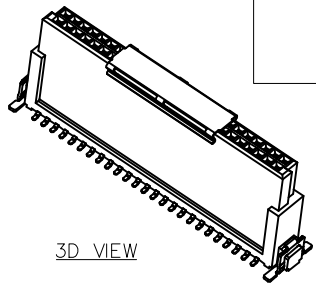
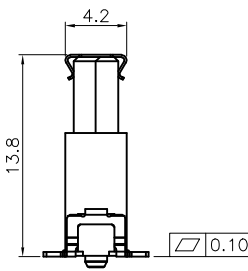


REV.	ECN NO.	LOCATION	DESCRIPTION	DATE	DESIGN
1			INITIAL RELEASE	2020.06.12	Yy_D

1. MATERIAL
  - 1.1 INSULATOR: LCP, UL94V-0, BLACK COLOR.
  - 1.2 CONTACT: COPPER ALLOY, GOLD PLATED(SEE ORDER INFORMATION) IN CONTACT AREA, 100u" MIN. MATTE-TIN PLATED IN SOLDER AREA, 50u" MIN. NICKEL UNDERPLATED OVERALL.
  - 1.3 LATCH: COPPER ALLOY, 100u" MIN. MATTE-TIN PLATED, 50u" MIN. NICKEL UNDERPLATED OVERALL.
  - 1.4 CAP: STAINLESS STEEL
2. SPECIFICATIONS:
  - 2.1 CURRENT RATING: 1.7A MAX.
  - 2.2 WITHSTANDING VOLTAGE: 500V AC/MINUTE.
  - 2.3 INSULATION RESISTANCE: 10000M OHMS MIN. DC 500V.
  - 2.4 CONTACT RESISTANCE: 25mΩ MAX.
  - 2.5 OPERATING TEMPERATURE: -55°C ~ +125°C.
  - 2.6 DURABILITY: 500 CYCLES.

5704BG-009R\*0\*\*R-\*\*

- R: ACQUIESCENT
- PIN: 12: 12PIN, 80: 80PIN, 0: BLACK
- CONTACTS PLATING: 1: Au G/F, 2: Au 5u", 3: Au 15u", 4: Au 30u"
- R: RoHS
- H: HALOGEN-FREE
- WTB



3D VIEW

NO. of Pins	A	B	C	D	E
80	56.28	52.55	49.53	53.95	15.2
68	48.66	44.93	41.91	46.33	
50	37.23	33.50	30.48	34.90	
40	30.88	27.15	24.13	28.55	
32	25.80	22.07	19.05	23.47	
26	21.99	18.26	15.24	19.66	4.2
20	18.18	14.45	11.43	15.85	
16	15.64	11.91	8.89	13.31	
12	13.10	9.37	6.35	10.77	

RECOMMENDED PCB LAYOUT(TOLERANCE: ±0.05)

DIM	TOL	DIM	TOL
x.	±0.35	x.	±2'
.x	±0.30		
.xx	±0.25		



**DEREN**  
SHENZHEN DEREN ELECTRONIC CO., LTD

CUSTOMER DRAWING	DATE	TITLE: WTB 1.27PH 13.8H SMT CONN
DESIGN: Yy_D	2020.06.12	P/N: SEE TABLE
CHECK:		SHEET: 1/2
REV. 1	APPROVAL:	SCALE: 1:1 UNIT: mm